



**AG~NUTRI
PTY. LTD.**

Give Your Cereal & Canola Crops The Edge

LIG-NITROS

GUARANTEED ANALYSIS (w/v)

NITROGEN	24%
SULPHUR	12%

Fully chelated nitrogen & sulphur foliar spray to improve the quality of cereal & canola crops

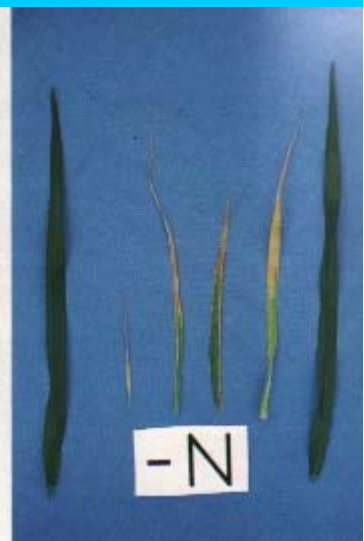
- ▶ Increase seed yield & oil content of canola
- ▶ Produces more sulphur containing amino acids & lifts wheat protein levels
- ▶ Reduces the sulphur deficit caused by the application of high analysis fertilizers
- ▶ Compatible with agri-chemicals

APPLICATION

Canola - 5 L/ha

Cereals - 3-5 L/ha

Below left: Canola with sulphur deficiency.
Below: Wheat suffering from nitrogen deficiency.



• SA/TAS/WA - 0408 633 661 • QLD/NT - 0439 520 744 • VIC/NSW - 0407 040 820

• Email: info@sjbagnutri.com.au • Technical support - 0407 040 820 • Fax: (03) 5862 1279 •

