



**AG~NUTRI
PTY. LTD.**

LIG-PENINSULA MIX

Mn 5%, Zn 3%, Cu 1%

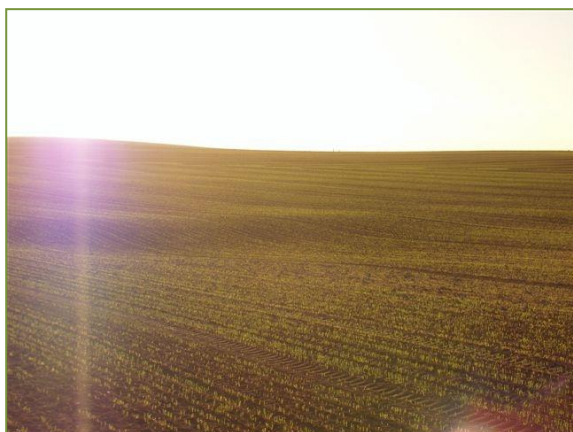
- ▶ High plant availability of chelated manganese, zinc & copper
- ▶ Easy to liquid formulation (no mixing required!)
- ▶ Compatible with post-emergent herbicides
- ▶ Cost effective at as little as \$4/ha
- ▶ Enhances disease resistance
- ▶ Improves grain set & yields
- ▶ Rain-fast

APPLICATION

1-2 L/ha at 5 leaf stage.

Also available: LIG-MALLEE MIX (Zn 5%, Mn 3%, Cu 1%).

Early application of manganese, zinc & copper is essential for crop development and starch production for optimum seed set & yields. LIG-PENINSULA MIX is ideal for early application because it binds to leaves, works quickly & can be applied with post-emergent herbicides. Manganese and zinc also improve protein levels in cereals while copper reduces lodging. All three trace elements also enhance disease resistance.



• SA/TAS/WA - 0408 633 661 • QLD/NT - 0439 520 744 • VIC/NSW – 0407 040 820

• Email: info@sjbagnutri.com.au • Technical support - 0407 040 820 • Fax: (03) 5862 1279 •

