

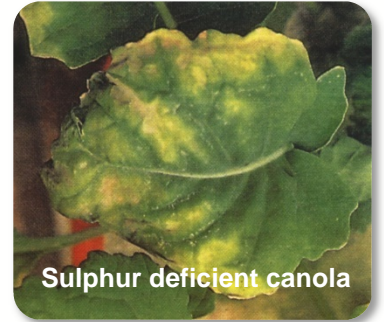
SPECIALTY LIQUID NUTRIENT PRODUCTS



LIG-NITROS

Nitrogen 24%, Sulphur 12%

- ▶ Increase seed yield & oil content of canola
- ▶ Sulphur is an essential nutrient for wheat & canola quality
- ▶ Low volatility for superior crop safety
- ▶ Promote growth in slow or waterlogged crops
- ▶ Organic foliar complex increases nutrient uptake
- ▶ Excellent chemical compatibility



Sulphur deficient canola

APPLICATION

Canola/Cereals: 5-10 L/ha as required.
Crop recovery: 10-20 L/ha.

pH: 8.0
SG: 1.25
20L, 200L, 1000L pack sizes



Available From
Nutrien
Ag Solutions®

- ▶ National Manager:.....0418 520 744
- ▶ Victoria & Southern NSW:0407 040 820
- ▶ SA, TAS, WA & Sunraysia:0408 633 661
- ▶ Qld, NT, Northern WA & Northern NSW: 0439 520 744

- ▶ Technical Support: 0407 040 820
info@sjbagnutri.com.au
- ▶ Order Enquiries: 0488 771 876
orders@sjbagnutri.com.au



AG~NUTRI

▶ www.sjbagnutri.com.au