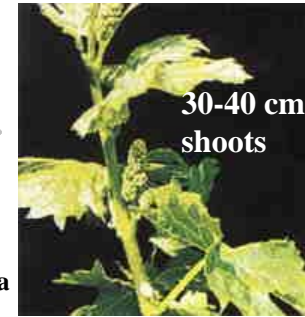
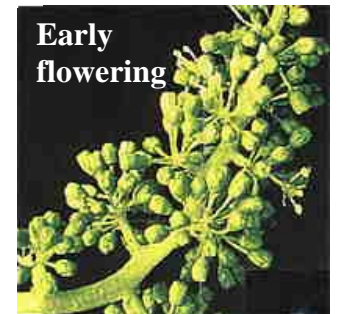


S. J. B. VINE NUTRITION CYCLE



LIG-TRACE @ 4 L/ha
VLP @ 5 L/ha
LIG-MOLY @ 1 L/ha (Merlot)
LIG-IRON @ 2.5 L/ha (On calcareous soils or those with a history of iron deficiency)

LIG-TRACE @ 4 L/ha
VLP @ 5 L/ha
LIG-MOLY @ 1 L/ha (Merlot)
LIG-IRON @ 2.5 L/ha (On calcareous soils or those with a history of iron deficiency)



VLP @ 5 L/ha

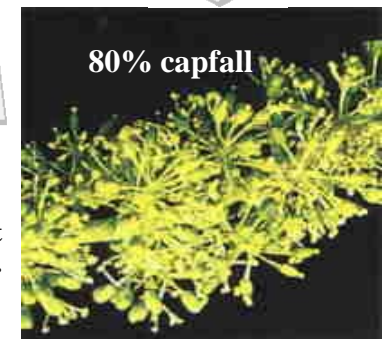
Post-Harvest
LIG-TRACE @ 2-4 L/ha
VLP @ 3 L/ha
CR NPKomplete @ 25 L/ha
LIG-HUMATES @ 10 L/ha
For vines < 3 years old apply:
LIG-POLYPHOS @ 5 L/ha



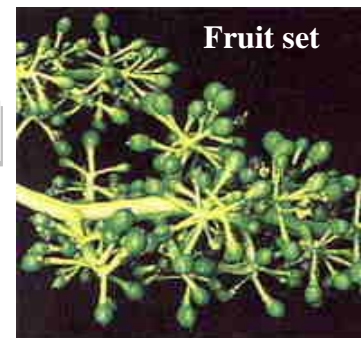
**AG-NUTRI
PTY. LTD.**

Disclaimer: SJB AG-NUTRI does not accept any liability for crop loss, crop damage or non-performance of recommended SJB AG-NUTRI products where poor managerial practices and/or adverse environmental conditions (eg. temperatures >34°C, herbicide damage/residual, moisture stress, high sodium/chloride or disease) have contributed to crop loss, crop damage or non-performance of recommended SJB AG-NUTRI products (Note: under adverse environmental conditions, application of SJB products will promote growth & may increase crop stress levels). SJB AG-NUTRI does not accept any liability for crop loss or crop damage where SJB AG-NUTRI products have been mixed with other chemicals or compounds not recommended by SJB AG-NUTRI or the manufacturer of the chemical or compound. Where recommendations have been made, to the best of our knowledge, but without the results of current soil and/or tissue analysis, SJB AG-NUTRI does not accept any liability for poor crop performance, crop loss or damage resulting from the implementation of these recommendations. © SJB AG-NUTRI 2015

Important note for foliar sprays: High water pH or hard water can significantly reduce the efficacy of your chemical & nutrient sprays. Optimize spray efficiency by using LIG-BUFFER @ 75-125 mL/100 L water in every tank.



Petiole test at this stage.



LIG-TRACE @ 4 L/ha

**To increase baume levels apply:
LIG-K + BORON @ 5 L/ha**

